

# Visitor Map



**Low Sensory**  
Quiet, well lit areas with fewer people and low noise levels

**Medium Sensory**  
Light areas with few people, some audio and visual noise

**High Sensory**  
Busy areas, with a mix of multimedia, loud noises and/or low lighting

**Cloakroom**  
Level LG

**Admissions - Information & Tickets**  
Level G

**Museum Shop**  
Level G

**Kiosk**  
Level 2

**Drinking Water Fountain**  
Level UG, 1, 2 & 3

**Toilets**  
Levels LG, UG, 1, 2, 3 & 4

**Ambulant Toilets**  
Levels LG, 1 & 2

**Accessible Toilet**  
Levels LG, G, 1, 2, 3 & 4

**All Gender Toilet**  
Level LG

**Parents Room**  
Levels LG & 2

**Changing Places**  
Complex accessible facilities  
Level 2

**Stairs**

**Escalator**

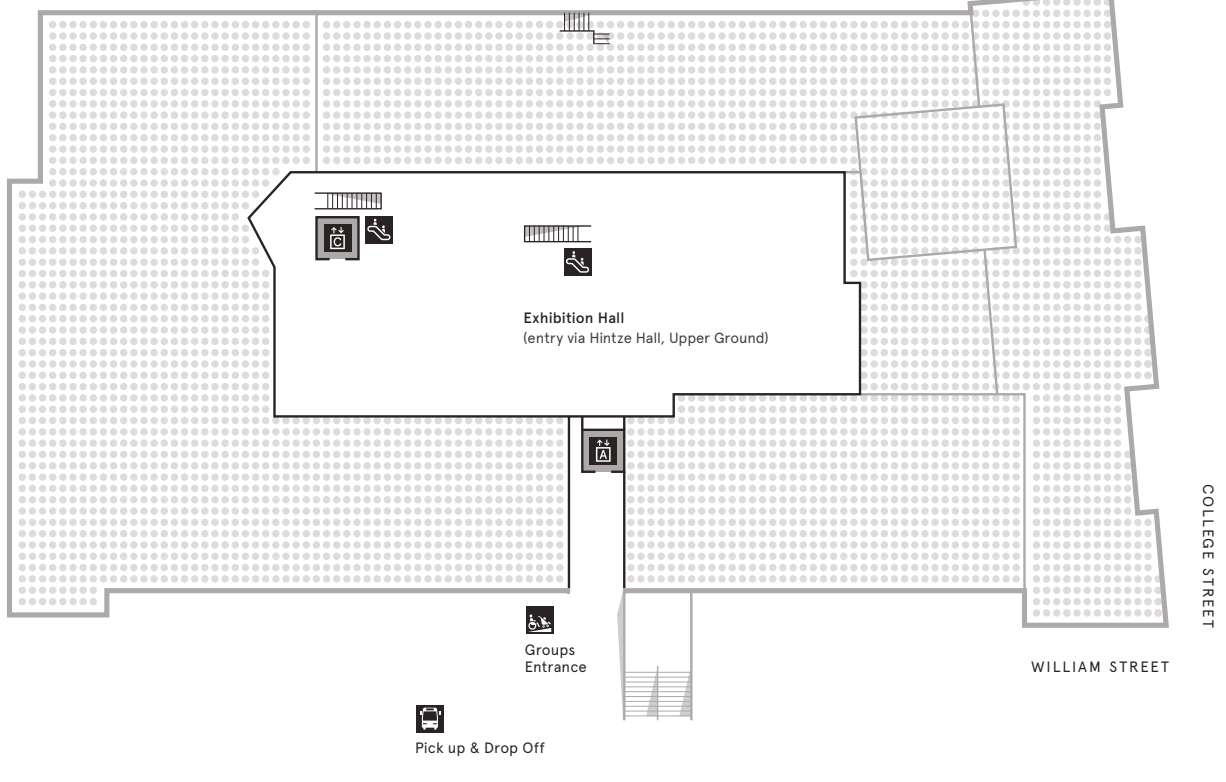
**Level access**

**Lift A**  
Access all levels

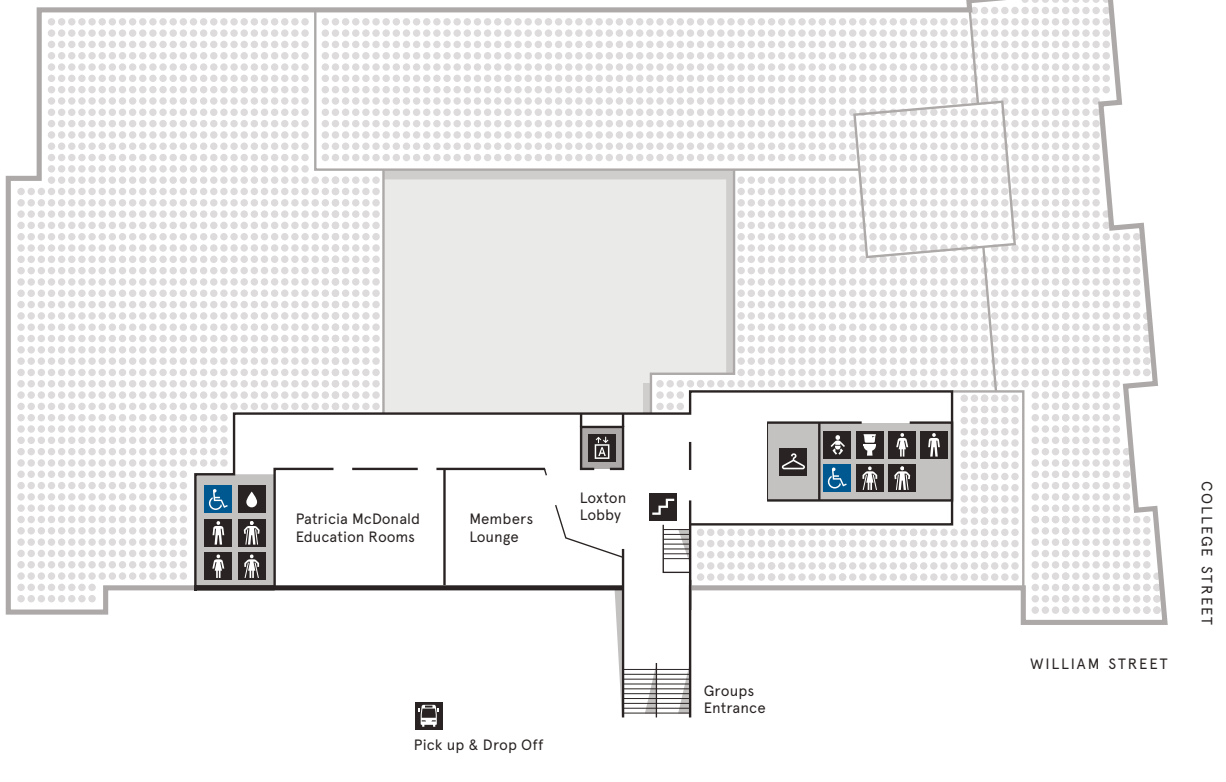
**Lift B**  
Access UG, 1, 2 & 4

**Lift C**  
Access B & UG

**B**



**LG**

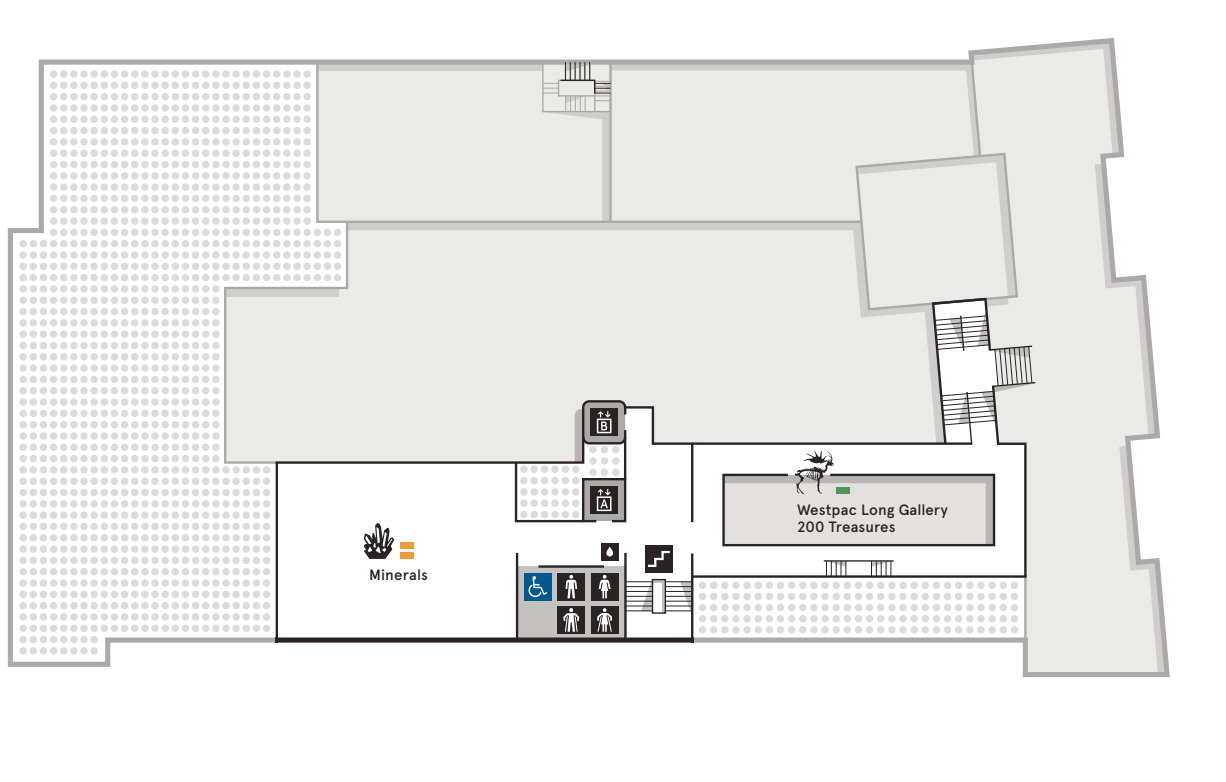


**G/UG**

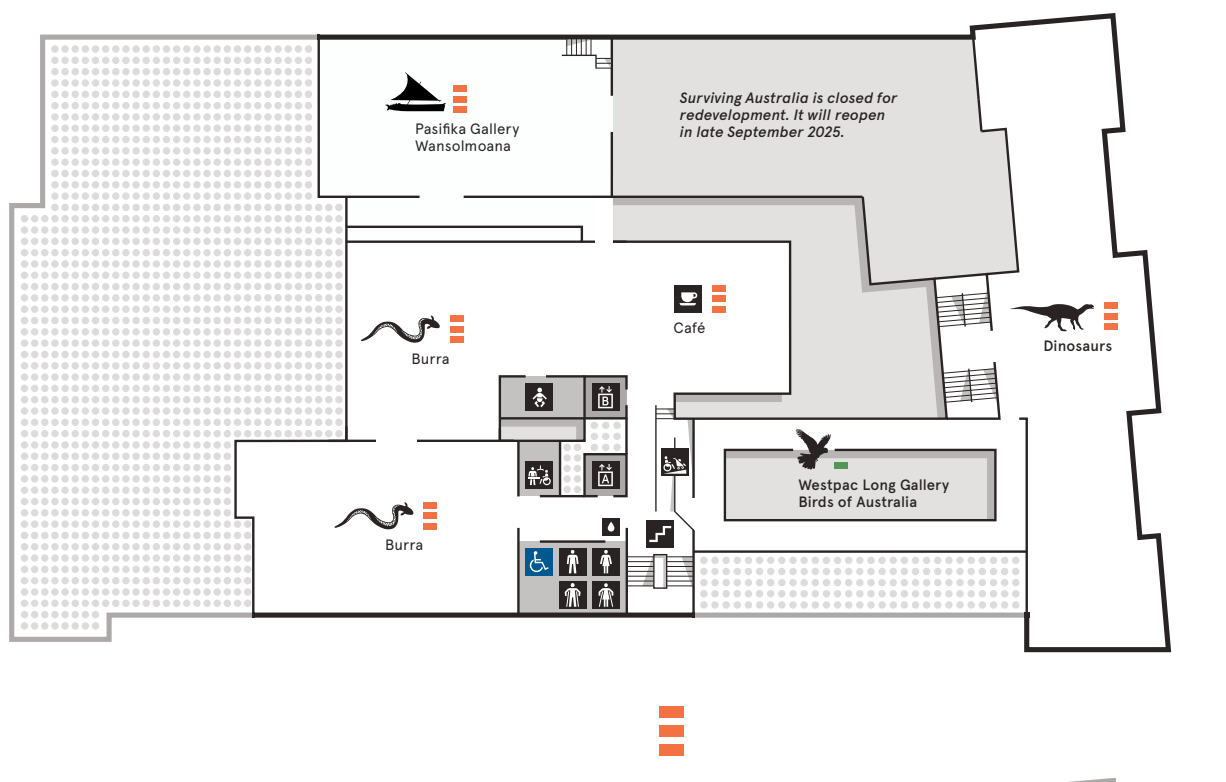
**Main Entrance/Exit**



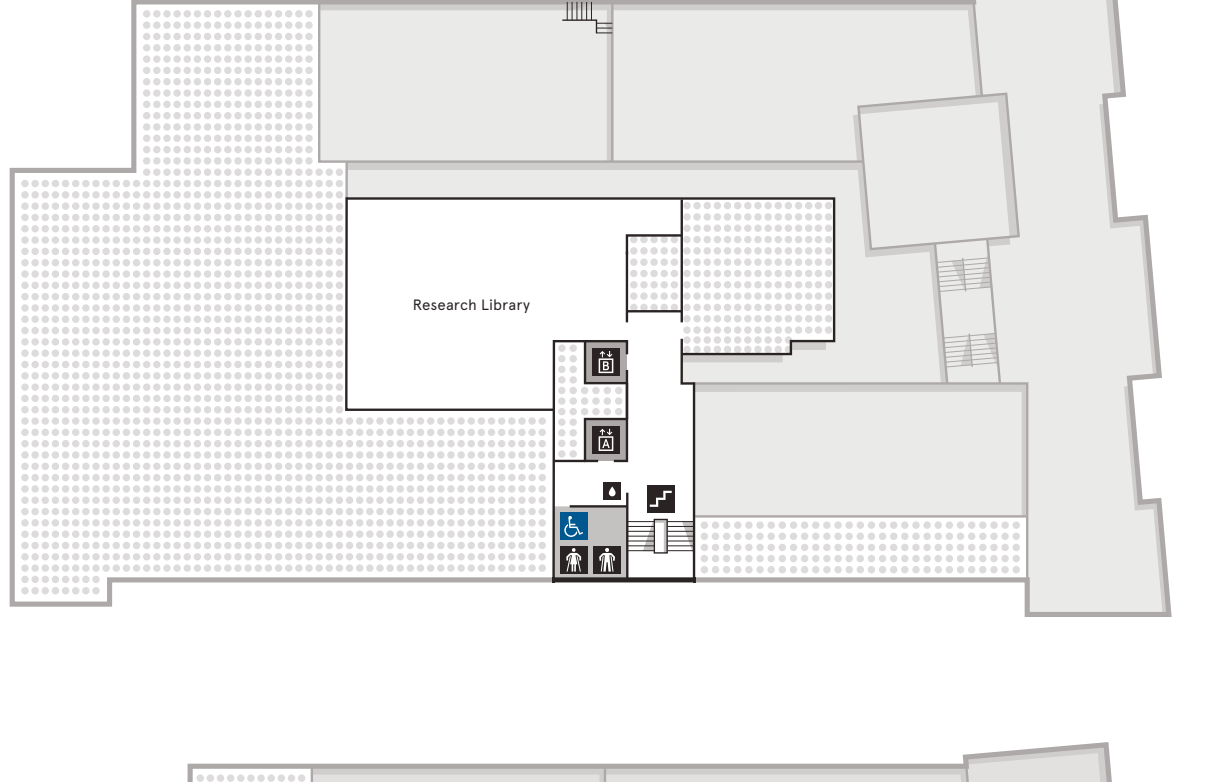
**1**



**2**



**3**



**4**

